



TOYOTA TACOMA TIRE CARRIER INSTALL INSTRUCTIONS

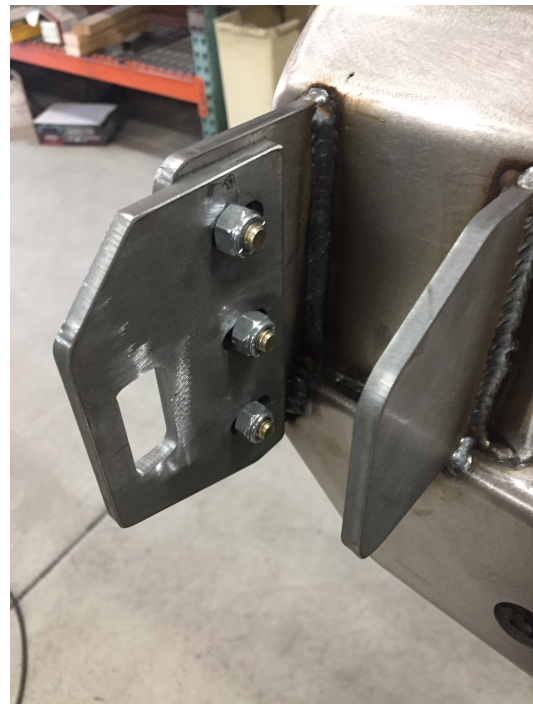
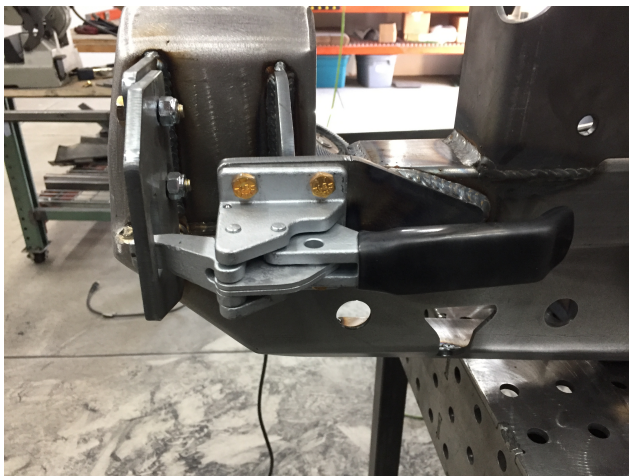
NOTE It is important to mask all threads and the inside of the bearing housing prior to paint or powder coating. If using a bed liner coating, do not coat the inside of the hinge bracket on the bumper. Tolerances are very tight in that area and the high build coating could make fitting the bearing housing difficult. Use regular paint for that part instead.

Install stainless steel slider plate onto the hinge bracket using the provided screws with a short Phillips screwdriver.

Prepare the bearing assembly for the hinge. The bearings are tapered to match the races pre pressed into the housing. Lubricate the bearings with extra grease before inserting into the bearing housing. Install the grease seals after bearings are inserted by GENTLY tapping in evenly with a hammer. The spacers are then inserted into the assembly as shown. It may be helpful to have a buddy around to insert the tire carrier bearing housing into the bracket but it can be done solo. Insert as shown below and thread bolt through the assembly and tighten. It will be a snug fit and may need to be tapped in with a dead blow hammer.



Install spring loaded pop pin into the threaded barrel on the bearing housing.
Install latch using the provided 1/4" x 1" bolts with washers on the nut side. Install the catch plate onto the large tab on the bumper using the provided 5/16" x 1" bolts with washers on each side. Adjust the plate so that the latch is closes firmly. The slotted holes allow for adjustment as the latch assembly breaks in over time, so you may need to readjust it later down the road. Tip: Use a couple pairs of vise grips with cardboard folded over the plates (to protect coating) to hold the plate in place while finding correct adjustment.



Install camera.

Open tailgate and remove the torx screws holding the composite cover to the tailgate. You do not need to remove the cap at the top of the tailgate, the composite cover will slider out from under it with the screws removed. Locate camera inside the tailgate and unclip wiring harness. Unclip fasteners holding the wire loom inside the tailgate and pull the wire loom out of the tailgate. Unbolt camera using a 10mm socket.

Install camera bracket to the center of the tire carrier to the top of the 2"x3" main tube using the supplied self drilling screws and 5/16" nut driver bit on a drill or impact driver. DO NOT OVERTIGHTEN SCREWS. Once the screw bottoms out it is tight enough.

05-15 Tacoma's: After removing the camera from the tailgate, remove camera from the plastic bracket using a small Phillips head screwdriver. Reinstall camera to new bracket using the same screws.

2016+ Tacoma's: Install camera to bracket using the supplied 1/4" bolts and nuts.

Using the supplied 4 conductor wire, strip away part of the outer jacket and splice an extension into to the oem camera wire harness so it is long enough to reach the new camera location with enough slack for the tire carrier to open and close. Zip tie the wire loom to the back of the tire carrier main 2x3 tube.

If using a Rotopax mount, you will not be using their provided round plate. Bolt the machined aluminum mount directly to the tire carrier plate.

Install is now complete. Enjoy your new bumper!



